



LIFEGROUPS

FROM ROWS TO CIRCLES

SUMMER 2024



TO SIGN UP FOR A LIFE GROUP:

1. Download the Church Center app
2. Enter your zip code, or let the app use your location to find "Bethel Life Center"
3. Select "Bethel Life Center" from the list of options
4. Enter your cell phone number
5. Enter the six-digit code they text you to verify it's your number
6. Once you've verified the number, you're all set



church center



OR YOU CAN GO ONLINE TO:

<https://blcwichita.churchcenter.com/groups>

If you have any questions about signing up, email our LIFE Group Director, Gail Starnes, gstarnes@blcwichita.com or call our church office at (316) 522-7148.

COMMUNITY GROUPS

Community Groups allow us to connect with people in our community! These groups meet all year round and provide a variety of fun experiences while building friendships.



BETHEL MEN'S CORPS

led by Bob Rardin
Once a Month
Email: brardin@cox.net

Men will meet once a month for food and fellowship at various venues.



BLC SAFETY TEAM

led by Brett Eisenman
3rd Thursdays at C3 Gunworks
Email: beisenman@blcwichita.com

Safety Team members will meet for fellowship and an informal meeting and training. Those interested in joining the team may sign up and proceed through the vetting process with the team leader.

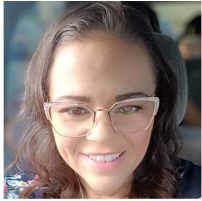


CRAFT CRAZY

led by Cheri Lankford
4th Saturdays from 1:30-3:30pm
in Rooms 108-109
Email: clankford@blcwichita.com

It's not just about creating, it's about the person you're becoming while creating! Whether your jam is yarn, thread, paper or painting, all crafts are welcome. It's all about crafting and fellowship.





DINING DIVAS

led by Joanna Bean

Once a Month

Email: jobeanz828@gmail.com

Women of all ages meet once a month at a local restaurant for food, fun and friendship. Eastside, westside, and downtown, our goal is to try new restaurants and build new friendships.



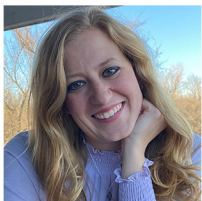
PRIME DIRECTIVE ADMINISTRATION (MISSIONS COMMITTEE)

led by Bill Boyer

1st Sundays from 12:45-2:30pm in Room 109

Email: inpursuitoftruth63@gmail.com

Do you have a heart for missions? There are opportunities awaiting you. Join the team and help shape the future of missions at BLC!



STRONGHOLD

led by Leah Walton

Twice a Month

Email: leah.girlie.2810@gmail.com

Stronghold is a group dedicated to using open-source intelligence to assist law enforcement or families to help find missing children in an effort to prevent them from being trafficked. Training required. If you're interested in joining the group, please contact Leah for meeting details.



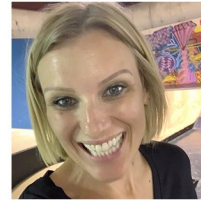
VETERANS AND ACTIVE MILITARY

led by Pat Gerber and Larry King

Twice a Week (Mondays at 3pm and Thursdays at 9am)

Email: gerber77@sbcglobal.net or lklive13@gmail.com

Those who serve our country face unique challenges and opportunities. They are definitely heroes, yet they deal with real, and sometimes painful, issues. We are open to anyone connected to the military and meet at Sojourner's Coffee House for coffee, friendship and support. God bless America.



WOMEN IN BUSINESS

led by Crystal Hervey

3rd Wednesdays from 8:45-10am at the Landmark Lounge (156 N. Emporia Ave, Wichita)

Email: shinebrightks@yahoo.com

This is a mentoring group of women business owners and entrepreneurs. This gathering is designed to foster accountability, support and encouragement among like-minded professionals.



YOUNG AT HEART

led by Dan and Sandi Cairns

Multiple Monthly Events

Email: sandilc726@gmail.com

This group of 55+ is about more than just food and fellowship. We are seasoned adults supporting each other. We enjoy monthly breakfast on first Wednesdays and monthly Saturday lunch outings. We also serve each other, the church and the community.



GROWTH GROUPS

Growth Groups meet throughout the week and focus on discipleship and spiritual growth. (Nursery and Kids Life Growth Groups available Sundays at 9am and 10:30am, and Wednesdays at 7pm.)



BIBLE BUDDIES

led by Chris Crumm and Kaci Conger

Daily - Text Based

Email: ccrumm.mesinc@gmail.com or kconger@blcwichita.com

A daily Bible study via group text for all ages. Walk through the Bible one chapter at a time. Share your thoughts, ask questions and have "aha" moments in a safe, private environment. As iron sharpens iron, this study will encourage one another in daily scripture reading and accountability.



CONTAGIOUS FAITH / WARRIOR WOMEN - DEBORAH

led by Ashley King, Cheri Lankford and Danice Squires

Wednesdays at 7pm in Rooms 108-109

Email: dsquires@blcwichita.com

Contagious Faith will prepare us to share God's love with others in a way that's authentic, comfortable, and impactful. (six-week study)

Warrior Women - Deborah will explore the story of Deborah, Barak and Jael. Discover what being a warrior for God looks like. (six-week study)

\$15 STUDY GUIDE



GOD ... ON THE MOVE!

facilitated by Karen Smith

Wednesdays at 7pm in the Sanctuary

Email: ksmith@blcwichita.com

BLC is about to get a front row seat of what God is doing in our world. BLC serves as home base for many ministry leaders. Join a dozen of these ministry leaders as they share their call and God's impressive provision on the front lines advancing God's Kingdom. You might be the next person God calls.





RENEWED HOPE

led by Pastor Karen Smith

Wednesdays at 7pm in the Conference Room

Email: ksmith@blcwichita.com

This Christ-centered program is designed for women who are seeking a fresh start in life. They are ready to work harder than they have ever worked before, but need help getting started.



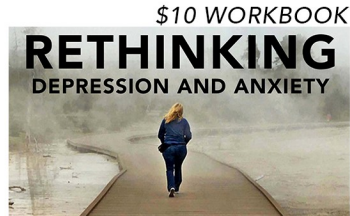
RETHINKING DEPRESSION AND ANXIETY (Men & Women)

led by Ken Squires, Larry King and Haley Stroud

Wednesdays at 7pm in Room 203 (east)

Email: ksquires@blcwichita.com

Everyone experiences anxiety and depression in life. When you experience it you are not broken, you are burdened. God offers hope as the remedy to pain, suffering, anxiety and depression.



\$10 WORKBOOK



7 CHALLENGES MEN ENCOUNTER

led by Jeff Wilson, Brett Eisenman and Bob Rardin

Wednesdays at 7pm in Room 110

Email: jeff.w.wilson1981@gmail.com

Learn to reject passivity, accept responsibility, lead courageously, love unconditionally, live with integrity, serve humbly, and invest eternally. See masculinity through the lens of Christ as you become a better man, husband, father, and leader.



\$10 STUDY GUIDE



THE CONNECTED PARENT: REAL-LIFE STRATEGIES FOR BUILDING TRUST AND ATTACHMENT

led by Jason and Danica Geesaman

Wednesdays at 7pm in Room 201 (west)

Email: jasong@hopefostered.org

Dr. Karyn Purvis gives practical advice and powerful tools to encourage secure attachment in your family. Lisa Qualls demonstrates how to implement the strategies developed through decades of clinical research and real-world experience. This study will help you lovingly guide your children and bring renewed hope and restoration to your family.

\$15 BOOK



THE MVMNT YOUTH

led by Joel and Whitney Halford

Wednesdays at 7pm in the Activity Center

Email: jhalford@blcwichita.com

The MVMNT is specifically designed for students in grades 6-12. We desire for students to have a direct encounter with God.



CELEBRATE RECOVERY

led by Kaci Conger

Thursdays at 6:30pm in Rooms 108-109

(meal at 5:30pm)

Email: kconger@blcwichita.com

This Christ-centered, 12-step recovery program is for anyone struggling with hurt, pain, or addiction of any kind. It is a safe place for men and women to admit and work on their hurts, habits and hang-ups. (Childcare provided - must sign up in advance.)





LYRICS OF LIFE

led by Shirley Scott and Earlene Rardin
Thursdays at 1pm in Room 109
 Email: shirleycowan1@yahoo.com
 or earlene11@cox.net

Sometimes we feel like we need to curb our emotions when we go to God. But God wants us to talk to Him no matter what. Lisa Harper leads us through the Psalms as she teaches about circumstances people faced as followers of God! Learn how to find comfort in any situation through the song book of the people of God.

FREE STUDY GUIDE



INTERCESSORY PRAYER

led by Lloyd Hermes
Fridays from 7-8pm in the Sanctuary
 Email: lshermes1@outlook.com
 Phone: 316.258.6701

This will be a focused time of prayer interceding for the lost, disenfranchised, or those who need healing in their spirit, mind, or body as well as other needs and requests made known to this group.

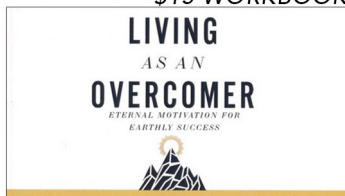


LIVING AS AN OVERCOMER: ETERNAL MOTIVATION FOR EARTHLY SUCCESS

led by Jonathan Rogers
Sundays at 9am in Room 109
 Email: consultjdr@gmail.com

The unique hardships of our modern lives can often feel insurmountable. But God's Word reveals that there is no obstacle, habit or situation we face that Jesus hasn't already given us power to conquer. As we heed God's instructions to the early church, we will learn to reject lukewarm faith and start living as overcomers.

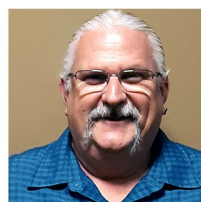
\$15 WORKBOOK



SOJOURNERS (DIVING DEEP INTO END-TIME EVENTS)

led by Jess Myers
Sundays at 9am in Room 110
 Email: jmyers341@gmail.com

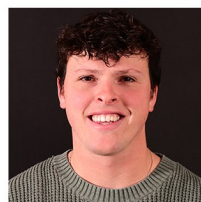
We are a group of men, women, couples, singles, widows, and widowers who enjoys studying the Bible. We dig into a book of the Bible (or a topic), discuss it, pray together and rejoice in every testimony shared.



1ST & 2ND SAMUEL (High School)

led by Chuck Feik
Sundays at 9:15am in The MVMNT Game Room
 Email: jhalford@blcwichita.com

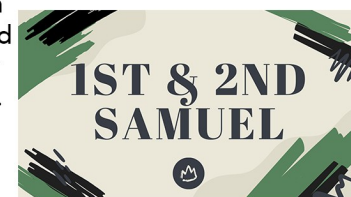
All youth in grades 9-12 are invited to join in for a time of relevant Biblical discussion and community-building connection. This study takes a deep dive into 1st and 2nd Samuel. Reading, discussing, learning, and praying.



1ST & 2ND SAMUEL (Middle School)

led by Joel Halford
Sundays at 9:15am in The MVMNT Cafe
 Email: jhalford@blcwichita.com

All youth in grades 6-8 are invited to join in for a time of relevant Biblical discussion and community-building connection. This study takes a deep dive into 1st and 2nd Samuel. Reading, discussing, learning, and praying.





INTERCESSORY PRAYER

led by Lloyd Hermes

Sundays at 10:10am in the Activity Center

Email: lshermes1@outlook.com

Phone: 316.258.6701

If you have a longing for fellowship with our Heavenly Father through communion with His Holy Spirit in the name and authority of Jesus Christ, join us on Sunday mornings at 10:10am for 15 minutes of pre-service intercession.



GRIEF SHARE

led by Shelly Rogers

Sundays from 1:30-3:30pm in the Conference Room

Email: rogers.shelly.m@gmail.com

GriefShare is a 13-week, Christ-centered support group seminar for grieving people who have lost a spouse, child, family member, or friend through death.

\$25 WORKBOOK



THE MVMNT HANGOUT

led by Joel and Whitney Halford Halford

1st Sundays from 6-8pm in the Activity Center

Email: jhalford@blcwichita.com

Students (grades 6-12) will get to know each other better as we chill, play basketball/football, read the Word and play games. Invite a friend and join us!



HOME GROUPS

Home Groups meet at least once a month in a home. Our home groups are geared towards easy fellowship, strengthening friendships and having a place to share LIFE.



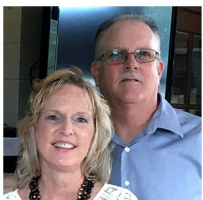
TIM & JANUARY BATTEN

Kid-Friendly

3rd Saturdays at 5:30pm

Email: jnbatten@hotmail.com

We have six children and have called BLC our church home since 2016. We have enjoyed serving the church family in many different roles, including becoming LIFE Group leaders in 2018. Our kid-friendly group is south of Mulvane (Sumner County) and we enjoy games, discussion, and plenty of food.



CECIL & LINDA HEPHNER

Kid-Friendly

Sundays at 5:30pm (twice a month)

Email: lshephner@yahoo.com

We call home just south of Haysville. We have been blessed with five beautiful, ornery grandkids that keep us busy, but we wouldn't have it any other way. We love to travel, experience new things and spend time with family and friends.



BRYAN & JULIE PARKER

Kid-Friendly

4th Sundays at 5:30pm

Email: parker.bryanandjulie@gmail.com

We have called BLC home for about two years and are excited to share our westside home with a LIFE Group! We have two boys, 12 and 14, and we enjoy the outdoors, all things Nerf and board games. We love building relationships with others through food, fun and exploring the scriptures together. We hope you can join us!



NEW TO BLC?

led by Ken and Danice Squires

Kid-Friendly

Once a Month

Email: dsquires@blcwichita.com

Pastor Ken and Danice Squires would like to invite you to their home for dinner. If you are new to BLC – within the last six months – please sign up. This will be a relaxed evening to enjoy conversation and get to know one another.

