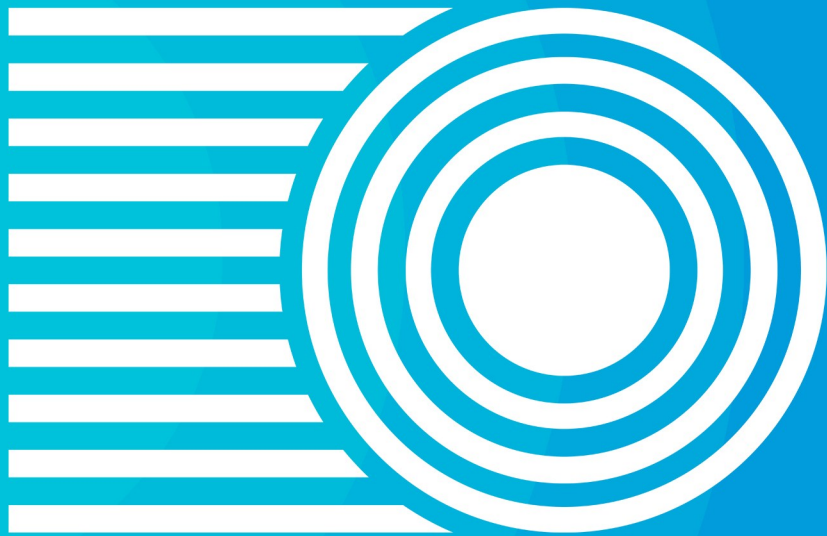


LIFEGROUPS



FROM ROWS TO CIRCLES

SUMMER 2026

TO SIGN UP FOR A LIFE GROUP:

1. Download the Church Center app
2. Enter your zip code or let the app use your location to find "Bethel Life Center"
3. Select "Bethel Life Center" from the list of options
4. Enter your cell phone number
5. Enter the six-digit code they text you to verify it's your number
6. Once you've verified the number, you're all set



church center



OR SCAN THE QR CODE:



If you have any questions about signing up, email our LIFE Group Director, Gail Starnes, gstarnes@blcwichita.com or call our church office at (316) 522-7148.

COMMUNITY GROUPS

Community Groups allow us to connect with people in our community! These groups meet all year round and provide a variety of fun experiences while building friendships.



BETHEL MEN'S CORPS

led by Bob Rardin
Once a Month
Email: brardin@cox.net

Men, young and old, meet once a month for food and fellowship at various venues. We enjoy great food and great conversations. You might even hear a joke or two. All guys are welcome



CHICKS AND A FLICK

led by Debbie Joe
Once a Month at 2pm (June 13, July 18, August 15)
Email: livintoservegod2@gmail.com

For women of all ages who love good movies. We will meet in Debbie's home and have fun food themes - maybe even based on the movie. Sometimes we laugh, sometimes we cry, sometimes we boo and hiss, but we always enjoy our time together! Bring a friend or two and yummy snack to share!



CRAFT CRAZY

led by Cheri Lankford
4th Saturdays from 1:30-3:30pm in Room 138
Email: clankford@blcwichita.com

It's not just about creating, it's about the person you're becoming while creating! Whether your jam is yarn, thread, paper or painting, all crafts are welcome. It's all about crafting and fellowship.





DINING DIVAS

led by Danice Squires
4th Tuesdays at 6pm
Email: dsquires@blcwichita.com

Women of all ages meet once a month at a local restaurant for food, fun and friendship. Eastside, westside, and downtown, our goal is to try new restaurants and build new friendships.



THE UNREAD MOM'S CLUB

led by Ashley King
3rd Sundays at 6pm at Nameless Coffee Co
(7130 W. Maple, Wichita)
Email: a.king11516@gmail.com

A space for moms who love Jesus, laughter, and maybe finishing a chapter ... someday. Each month we'll have a book to inspire our theme and conversation but reading it is totally optional. Whether you've read the whole thing, half of it, or just the title, you're welcome here. No kids. No pressure. No guilt. Just coffee, conversation, and community with other moms who get it. Come to laugh, to share, to rest, and to refill your cup, because grace covers unfinished books and unfinished laundry, too.



LEADHER NETWORK

led by Crystal Hervey
3rd Wednesdays from 9-10:30am at IMA
(430 E. Douglas, 4th floor, Wichita)
Email: shinebrightks@yahoo.com

This is a mentoring group of women business owners, entrepreneurs and leaders. This gathering is designed to foster accountability, support and encouragement among like-minded professionals.



VETERANS AND ACTIVE MILITARY

led by Pat Gerber and Larry King
Twice a Week (Mondays at 3pm and Thursdays at 9am)
Email: gerber1954@sbcglobal.net or lklive13@gmail.com

Those who serve our country face unique challenges and opportunities. They are definitely heroes, yet they deal with real, and sometimes painful issues. We are open to anyone connected to the military and meet at Nameless Coffee Co (Sojourner's) for coffee, friendship and support. God bless America.



MOVE IT! MOVE IT!

led by Danice Squires (walker)
and Cassandra Grieve (runner)
Saturdays from 9-10:15am
Email: dsquires@blcwichita.com

This group is for those who want to get moving. Walking or running, we meet at Sedgwick County Park every Saturday from 9-10:15AM, from June 13 – August 29. Park in the parking lot of the main playground off 21st St. (Cancelled if pouring rain.) Kids, dogs and hubbies welcome.



VOLLEYBALL (ADULTS 18 AND OLDER)

led by Leah Walton
Every other Tuesday at 7pm
Email: leah.girlie.2810@gmail.com

Do you love volleyball? This is the LIFE Group for you! Join us every other Tuesday evening at one of the parks in the Wichita area for an evening full of volleyball and fun! You must be 18+ to join. Start time will be 7pm. Details will be sent the week before.





YOUNG AT HEART

led by Dan and Sandi Cairns
Multiple Monthly Events
Email: sandilc726@gmail.com

This group of 55+ is about more than just food and fellowship. We are seasoned adults supporting each other. We enjoy monthly breakfast on first Wednesdays and monthly Saturday lunch outings. We also serve each other, the church and the community.



GROWTH GROUPS

Growth Groups meet throughout the week and focus on discipleship and spiritual growth. (*Nursery and Kids Life Growth Groups available Sundays at 9am and 10:30am, and Wednesdays at 7pm.*)



BIBLE BUDDIES

led by Kaci Conger and Chris Crumm
Daily - Text Based
Email: kconger@blcwichita.com or
ccrumm.mesinc@gmail.com

A daily Bible study via group text for all ages. Walk through the Bible one chapter at a time. Share your thoughts, ask questions and have "aha" moments in a safe, private environment. As iron sharpens iron, this study will encourage one another in daily scripture reading and accountability.



YOUNG ADULT GROUP (FORMERLY "THE COLLECTIVE")

led by Elodie Casimir and Joel Halford
1st & 3rd Mondays at 6:30pm in the Upstairs Lounge
Email: casimirelodie74@gmail.com

This group is for single young adults (ages 18-29) who desire to come together for a time of worship, Biblical conversations, connection, food and fun activities. You are invited to join us as we grow together!

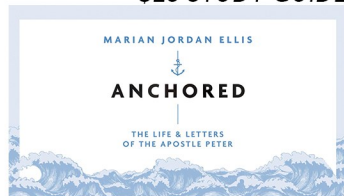


ANCHORED (BY MARIAN JORDAN ELLIS)

led by Danice Squires, Ginger Beilfuss and Debbie Joe
Wednesdays at 7pm in Rooms 108-109
Email: dsquires@blcwichita.com

Join us for this study that explores the life and letters of Peter, a disciple who left everything to follow Jesus. Peter's life and apostolic ministry will model for us how to anchor our lives to Jesus, while the letters of 1 and 2 Peter will reveal an enduring hope that enables us to withstand the storms of life, and even thrive in the midst of them.

\$23 STUDY GUIDE



ESTUDIO BÍBLICO DEL LIBRO DE APOCALIPSIS

Liders: Nereida Croft, Omer Campos, Edna Campos
Miercoles a las 7pm, en la habitación 201 arriba
Email: nereidacroft12@gmail.com or
omercampos@gmail.com

Este estudio sobre el libro de Apocalipsis se centrará en comprender la revelación de Jesucristo y Su victoria final sobre el mal, así como el establecimiento del Reino de Dios. Exploraremos cada capítulo con el fin de escudriñar las profecías acerca de los tiempos finales, la segunda venida de Cristo, el nuevo cielo y una nueva tierra centrándose en su significado espiritual y en cómo aplicar sus enseñanzas en nuestra vida diaria.



QUESTIONS GOD ASKS

led by Jamaal Watson and Dan Beilfuss
Wednesdays at 7pm in the Sanctuary
Email: watsonjamaal@outlook.com
or dbeilfuss@blcwichita.com

Throughout Scripture, God asks questions. Not to gain knowledge, but to reveal hearts. The questions God asks are invitations to seek honestly and to see God more clearly. Across these weeks we will explore some of the questions God asks and see where He takes us.



RETHINKING LOVE AND MARRIAGE 2.0 (Couples Only)

led by Ken Squires
Wednesdays at 7pm in the Upstairs Lounge
Email: ksquires@blcwichita.com

At the heart of marriage is the longing for companionship and the search for intimacy. These class lessons will provide you with tools to heal from your past and provide resources to resolve conflict. We will discuss qualities that make for a satisfying and enriching marriage: communication, forgiveness, and unconditional love.

\$10 WORKBOOK





THE MVMNT YOUTH

led by Joel and Whitney Halford
Wednesdays at 7pm in the Activity Center
Email: jhalford@blcwichita.com

The MVMNT is specifically designed for students in grades 6-12. We desire for students to have a direct encounter with God.



CELEBRATE RECOVERY

led by Kaci Conger
Thursdays at 6:30pm in Rooms 108-110
(meal at 5:30pm in the Activity Center)
Email: kconger@blcwichita.com

This Christ-centered, 12-step recovery program is for anyone struggling with hurt, pain, or addiction of any kind. It is a safe place for men and women to admit and work on their hurts, habits and hang-ups. *(Celebration Place and The Landing programs for nursery through 12th grade.)*



WHAT HAPPENS NEXT (BY MAX LUCADO)

led by Jeff Wilson, Brett Eisenman and Bob Rardin
Wednesdays at 7pm in Room 110
Email: jeff.w.wilson1981@gmail.com

Are we living in the end times? If so, what does that mean for us? These questions can cause confusion and anxiety, but God wants us to be prepared, not scared; informed, not intimidated. Join us on an optimistic and accessible journey into what the Bible says about the end times. Understand God's eternal plan and events like the Rapture, Tribulation, and our eternal glory in Heaven. The end of our story is all about hope and all about Jesus.



WOMEN AT THE WELL (SPACE IS LIMITED)

led by Deanna Speer
Thursdays Twice a month on Thursday Evenings
Email: dspeer777@gmail.com

Jesus met the Samaritan woman "at the well" in John 4, revealing her identity and unique calling, and He offers the same to us. We grow in relationship with God and each other as we dive deeply into Scripture, allowing the Holy Spirit to lead and guide us. We prioritize time together, hunger to hear from God, grow in faith, and cultivate genuine relationships with vulnerability, authenticity, and love.



THE BOOK OF 1 SAMUEL (BY SHARON HODDE MILLER)

led by Shirley Scott and Earlene Rardin
Thursdays at 1pm in Room 109
Email: shirleycowan1@yahoo.com
or earlene11@cox.net

The heroes of the Bible offer complex, flawed examples of leadership. Their stories prompt us to examine the difference between our outward appearance and what God sees in our hearts. In this series, pastor and author Sharon Hodde Miller guides us through the book of 1 Samuel, exploring the frailty of the human heart and the faithfulness of God.



INTERCESSORY PRAYER

led by Lloyd Hermes
Fridays from 7-8pm in the Sanctuary
Email: lshermes1@outlook.com
Phone: 316.258.6701

This is a time of intentional fellowship with our Heavenly Father; reading His Word, praying in the Spirit or with understanding, sitting in His presence or enjoying saturating worship as the Holy Spirit leads. We welcome you to come give your offering of thanksgiving and praise for what He has done for you and what He wants to do for others.





A MAN AND HIS FATHERHOOD (33 THE SERIES)

led by Don Starnes and Charles Drake
Sundays at 8:45am in Room 201
Email: donaldwstarnes@gmail.com or
cdrake@blcwichita.com

\$15 STUDY GUIDE



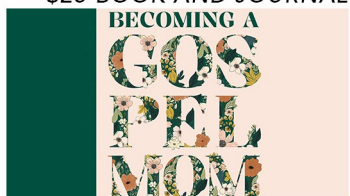
Being a dad is one of the most important and influential rolls a man could ever play in his life. But becoming a good dad doesn't always come naturally. This series is designed to help you win as a dad; to help you think strategically and become equipped with insights that will help guide you through key decisions and the great challenge of being a dad.



BECOMING A GOSPEL MOM (BY EMILY A. JENSEN AND LAURA WIFLER)

led by Ashley King
Sundays at 9am in Room 108
Email: a.king11516@gmail.com

\$25 BOOK AND JOURNAL



Becoming a Gospel Mom equips women on their journey of gospel-motherhood and biblical decision making for themselves and their family.



MY JOURNEY WITH CHRIST: WHERE TO NOW?

led by Kelly Eisenman, Kurtis & Jenna Tuck,
Jake & Abigail Turner
Sundays at 9am in the Conference Room
Email: keisenman@blcwichita.com or
gstarnes@blcwichita.com



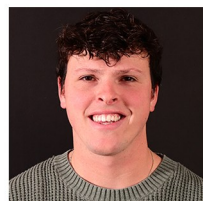
You've made the decision to follow Christ, but what is your next move? How do you keep from being stuck where you started? Whether you're a new believer just beginning your journey of faith, or you have been on this journey for a while but need direction, this is the class for you. All People Matter to God and He has a plan to help you grow and become more like Him. Join us as we follow in the steps He has laid before us!



SOJOURNERS (EXPLORING CURRENT AND END-TIME EVENTS IMPACTING ISRAEL AND ALL CHRISTIANS)

led by Jess Myers
Sundays at 9am in Room 110
Email: jmyers341@gmail.com

We are a group of men, women, couples, singles, widows, and widowers who enjoys studying the Bible. We seek to study and learn what the Bible says about end-time events currently happening that are relevant to Israel and the soon return of Jesus Christ.



MVMNT GROWTH GROUP (Middle and High School)

led by Joel Halford
Sundays at 9:15am in the Upstairs Lounge
Email: jhalford@blcwichita.com

All youth in grades 6-12 are invited to join in for a time of relevant Biblical discussion and community-building connection.

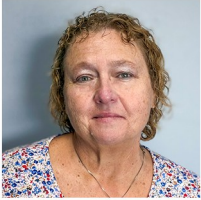


INTERCESSORY PRAYER

led by Lloyd Hermes
Sundays at 10:10am in the Activity Center
Email: lshermes1@outlook.com
Phone: 316.258.6701

Join us on Sunday mornings at 10:10am for a short time of pre-service intercession as we pray for the upcoming service and for all in attendance. We will meet in the Activity Center.





GRIEF SHARE

led by Pam Brockman

Sundays from 1:30-3:30pm in the Conference Room

Email: pbpern@gmail.com

\$25 WORKBOOK

GriefShare is a 13-week, Christ-centered support group seminar for grieving people who have lost a spouse, child, family member, or friend through death.



THE MVMNT HANGOUT

All Youth (co-ed) Fellowship Group

led by Joel and Whitney Halford

1st Sundays from 6-8pm in the Activity Center

Email: jhalford@blcwichita.com

Students (grades 6-12) will get to know each other better as we chill, play basketball/football, read the Word and play games. Invite a friend and join us!



HOME GROUPS

Home Groups meet at least once a month in a home. Our home groups are geared towards easy fellowship, strengthening friendships and having a place to share LIFE.



CECIL & LINDA HEPHNER

Kid-Friendly
Once a Month
Email: lshephner@yahoo.com

We are a south side group that meets once a month. We love to eat, play games, and laugh a lot, but best of all we are there to encourage and pray for one another.



NEW TO BLC?

led by Ken and Danice Squires
Kid-Friendly
One Sunday a Month
Email: dsquires@blcwichita.com

Pastor Ken and Danice Squires would like to invite you to their home for dinner. If you are new to BLC – within the last year – please sign up. This will be a relaxed evening to enjoy conversation and get to know one another.

LIFE Group Mission: Doing LIFE together by providing a place to connect, grow and share.

- *Connect: Connecting with all people because ALL people matter to God.*
- *Grow: Providing a space for people to find God and grow deeper with Him.*
- *Share: Building friendships that can last a lifetime - we need each other!*

